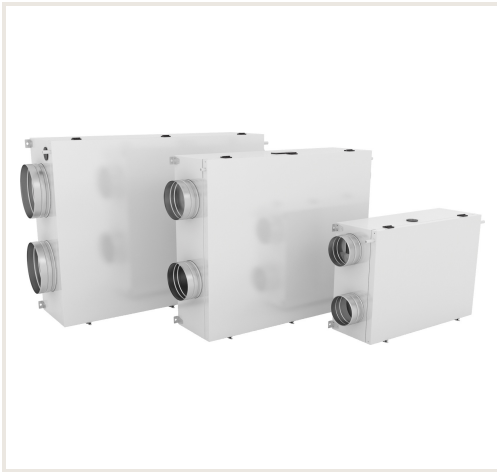


## Heat recovery unit Duplex 370 EC5.CP with Bypass



**Product code:** W2VED-R-A160501

**Brand:** Array

**Category:** Ventilation equipment, ventilation systems > Heat recovery units

---

**PRICE : €3,836.00**

---

### About the product

**Manufacturer:**

**Country of origin:**

**Height, mm:** 290

**Width, mm:** 930

**Depth, mm:** 1116

**Efficiency class:**

**Mounting diameter:** 200

**Item type:**

**Mounting type:**

**Heating (cooling) area (m2) to:** 240

**Max. performance (m3/h) to:** 370

**Warranty, year:** 5

**Heatexchanger type:**

### Description

**Casing** - Sandwich construction with 30 mm mineral heat insulation with outer and inner panels.

**Filter G4 / F7** - Customers can choose between standard G4 / F7 grade fabric filters or cassette filters with G4 / F7 grade to choose from.

**Connection options** - Standard control system allows for connection with a wide range of external sensors of air quality with switch contact or a 0-10 V outlet, control of closeable and mixing heating valves and thanks to 4+1 temperature and 2 pressure sensors inputs, optimal operation of the unit is ensured in every mode.

**Easy access** - The door opens fully for easy access into the unit and it makes replacing filters and other servicing after installation easier.

**Fully closeable bypass** - Operation of the bypass is fully automatic depending on the temperature in both versions of the control system. In RD5 control system it is based on the setting of input air temperature and in CP control system on a fixed temperature for opening the bypass shutter. When it is open, the recovery exchanger is fully closed.

**Energy** - The ration of the energy input of the ventilators / recovery during ventilation reaches the energetic efficiency value of 20 - 40, i.e. for 1 W of electric energy for operation of DUPLEX EC5, up to 40 W of energy is recovered from waste air. Effective ratio 1 : 40.

**Automatic frost protection** - Can be achieved via an electric preheater or an automatic control of ventilator rotation at air outlet and inlet.

**Constant flow** - Option of controlling the unit's performance for a constant flow.